

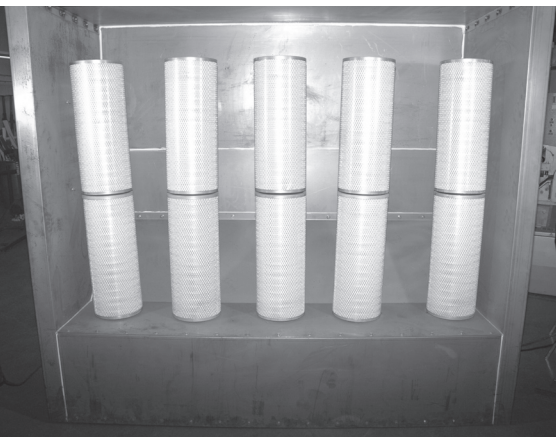
JBF PC8000 FILTER CARTRIDGE POWDER COLLECTOR

FEATURES AND BENEFITS

- 72" deep x 8' wide x 73" high
- Front face complete with pre-punched holes to accept spray booth panels
- Adjustable sequential timer and delay with ten automatic pulse filters
- High efficiency filters reduce maintenance costs and maximize performance



Filters have 98% efficiency for .05 micron particles



Cartridge filters designed to be above floor level to eliminate operator from pushing reclaim powder into cartridge filter. This extends the life of the cartridge and prevents clogging.

JBF PC8000 booths are designed to maintain an average minimum face velocity of 80FPM across booth openings.

The blower is balanced at factory to comply with ANSI/AMCA standard 204-05, category BV-3

Blower: 8200 CFM at 5" s.p, 15HP

- Filters collect airborne powder
- Powder is more confined in space due to its design
- Filters are easy to install and remove. Installed in 2 vertical rows
- Four HEPA final filters prevent fine powder particles from entering the work area
- Low decibel emission

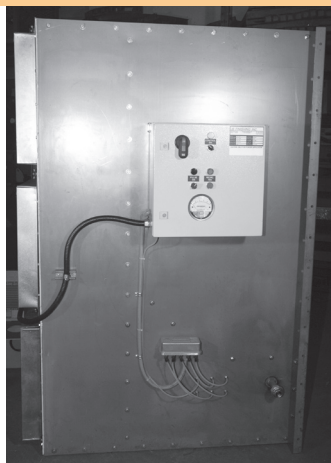


CONTROL PANEL:

- NEMA 12 remote electrical panel
- Primary disconnect
- Automatic purge/pulse control
- Magnahelic pressure gauge serves as a diagnostic tool to detect clogged cartridge filter
- Purge control assures safe operation of the powder booth by maintaining airflow at designed levels.

During operation, powder accumulates on the cartridge filters, activating a system of air purging valves that clear the cartridge filters of accumulated powder to ensure maximum filter life.

- Blow down indicator selector switch allows cartridge pulsing at the operator's convenience
- Panel is ESA certified prior to shipping, panel is approved for anywhere in North America



Your unit will ship complete with minimal assembly. Booths are constructed from 14ga steel, satin coat for long durability. We offer: 460/3/60 or 575/3/60, 30amp disconnect required for either



JB Finishing Inc. is your manufacturer and service provider for paintline and mechanical equipment.

We deliver higher productivity and return on your investment from your paintline operations with our experience and dedication to superior design, manufacturing and servicing.

**490 Piercey Road • Bolton, Ontario • Canada L7E 5B7
Tel.: 905-951-9529 • Fax: 905-951-0656
24HR Service Pager: 416-600-2509**